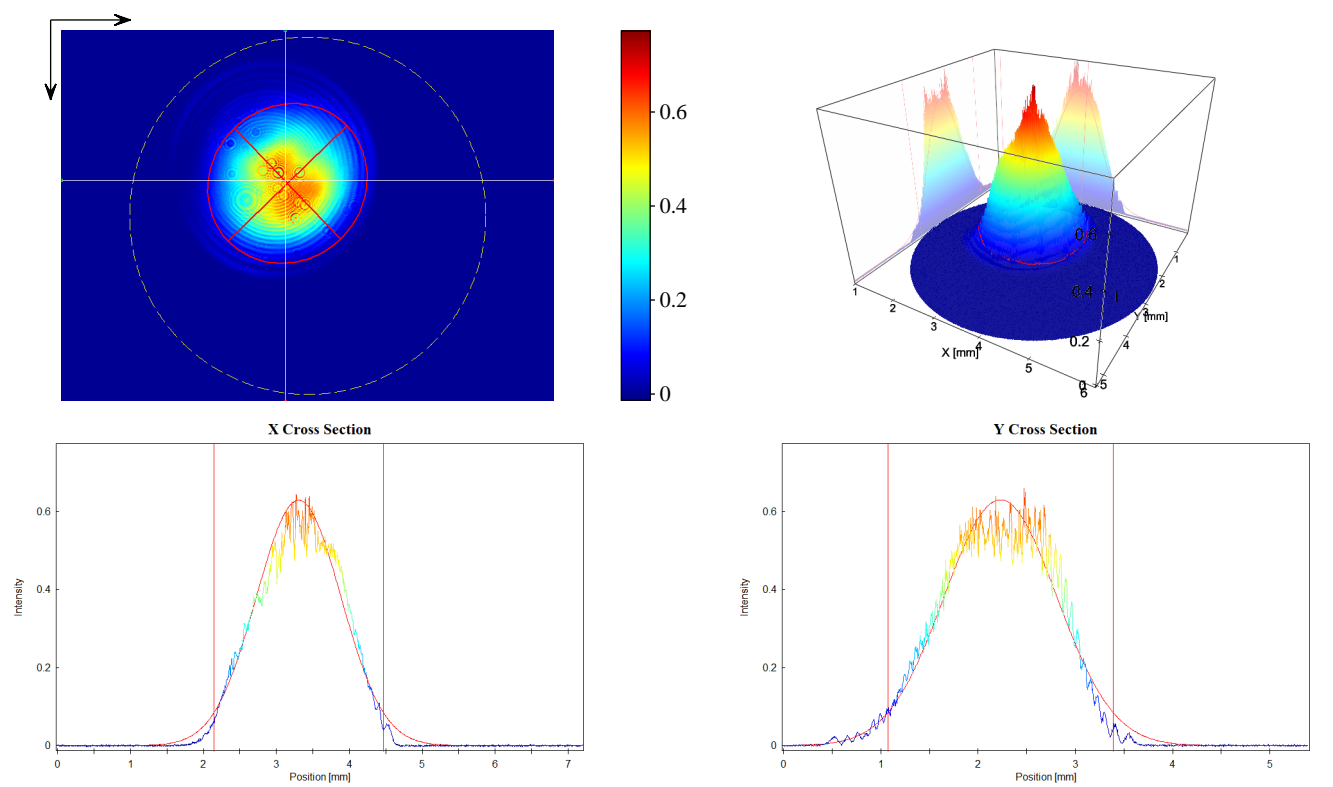


| | | | | | |
|-----------------|--------------------|------------------|---------|----------------------|-----|
| User: | | Type: | | Beam Attenuator: | |
| Camera: | CinCam CMOS 1203 | Wavelength: | 1064 nm | Beam Splitter: | |
| Serial: | 1203-U2-4521-0117 | Manufacturer: | | Focusing Element: | |
| Accessory Type: | plain | Model: | | Other Optical Units: | |
| Date: | 2026/06/23 火曜日 | Serial Number: | | Laser Temp.: | |
| Type: | Single Measurement | Polarization: | | Ambient Temp.: | |
| Frames: | 24 | Output Power: | | Humidity: | |
| Frequency: | | Operation Mode: | CW | Background: | yes |
| Pixel Size: | 1600 x 1200 | Pulse Energy: | | Flat Field: | no |
| Comment: | | Pulse Width: | | Angular Response: | no |
| Exposure Time: | 7.000 ms | Pulse Frequency: | | Baseline: | yes |
| Gain: | 1.00 x | M^2: | | Linearity: | no |
| Brightness: | invalid | Comment: | | | |



Statistic

| | |
|------------------|----------|
| Number of Pixel: | 499584 |
| Power: | 6.291E+4 |
| Peak: | 0.7724 |
| Peak Pos x: | 3.195 mm |
| Peak Pos y: | 2.002 mm |
| SNR: | 57.8 dB |

Gauss-Fit (13.53 % ~ 1/e^2)

| | |
|--------------------|------------|
| Exponent: | 2.00 |
| Centroid x: | 3.302 mm |
| Centroid y: | 2.228 mm |
| --- Width Lab --- | |
| Width x: | 2.328 mm |
| Width y: | 2.322 mm |
| --- Width Beam --- | |
| Width Major: | 2.411 mm |
| Width Minor: | 2.236 mm |
| Azimuth Angle: | -44.09 deg |
| Ellipticity: | 0.927 |
| Eccentricity: | 0.374 |
| --- | |
| Cross-Sect. Area: | 4.234 mm^2 |
| Power Fraction: | 87.87 % |
| GFI: | 0.976 |
| Correlation: | 0.806 |